

# Q series CONTROLLER

## FOR WIPLUX DEVICE

Q series are controllers for privacy and convenience to monitoring and controlling many electrical groups that aim to solve for the **business and organization**.

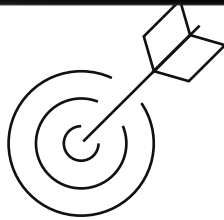
Q series controller can support connections from inside and outside the company or organization (Not using and using the Internet) and can add/remove WiPLUX devices connected to the controller as needed.

“Multi-Room in a controller”

### Main Features

Manage ON/OFF/Restart	Wi-Control	Energy Monitoring	Amp Volt Watt Digital Meter Online	High Current Support	30A
Automatic conditions ON/OFF/Restart	Wi-Ping	Amp Volt Watt Values	2 Decimal Places Resolution	Communication Port	• Ethernet • WiFi
Amp Volt Watt Protection	Wi-Recloser	Control Mode	SELF INTERLOCK MASTER GROUPING	Short Circuit	Durable
Management	Wi-Schedule	History	Log File	Surge Protection	Triple Varistor with Sensing

\*\*Specifications and appearance are subject to change without notice for product improvement.



## WHY WIPLUX?

- ◆ Quickly control
- ◆ Reduce travel
- ◆ Increase competitiveness

“The Q Series acts like a WiPLUX Cloud”



Intellect Network Web Co., Ltd.  
 9 Ramkhamhaeng43 Huamak Bangkokpi  
 Bangkok 10240 Thailand  
 www.wiplux.com  
 (+66) 081 309 9929, (+66) 02 718 8924

# Q SERIES CONTROLLER

## FOR WIPLUX DEVICE

### FEATURES

**SWITCH ON/OFF**  
switch ON/OFF individual channel via the Web App

**SPLIT GROUP**  
split group into many PDU

**MERGE GROUP**  
merge group into one PDU

**ACCESSING M, L SERIES**  
accessing WP devices on Local Area Network, or the Internet

**SCHEDULE CONTROL**  
schedule control can be set in seconds

**REAL-TIME CONTROL**  
real-time control of each channel of the WP devices

\*\*Options add on some functions.

**AUTOMATIC RECLOSER**  
automatic recloser electrical protection

**ON Delay**  
ON delay of each channel

**PING IP**  
ping IP to the load device for ON/OFF/Restart automatically

**MONITORING**  
monitoring current, voltage, power, energy consumption, and environment status

**LOG FILES**  
log files playback for history and past event investigation

**FIRMWARE**  
firmware online update

**\*\*Wi-Map**  
memorize the installation location

**\*\*Wi-Dev**  
API management tools for developers customize

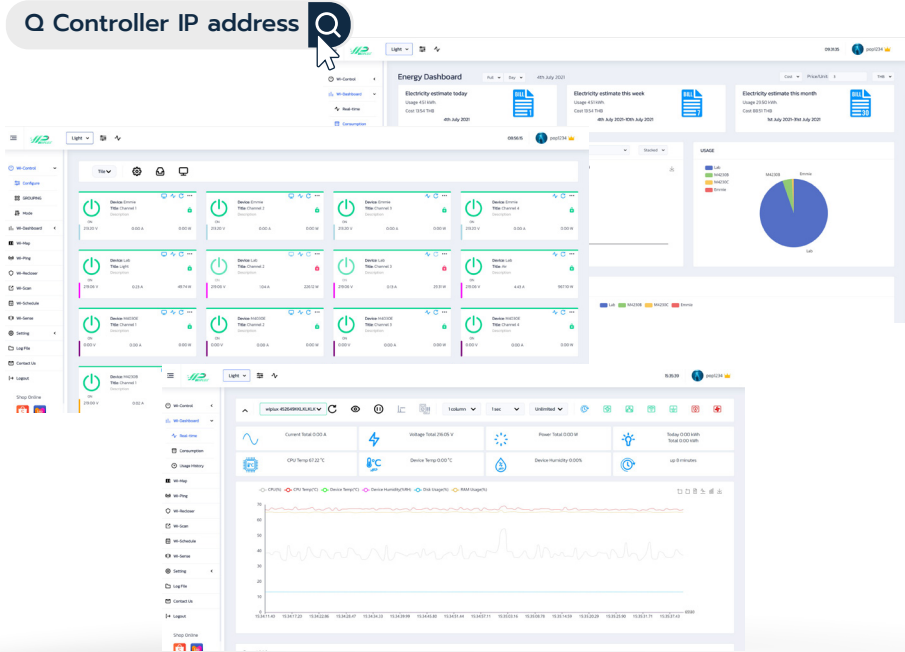
**\*\*Wi-Sense**  
monitoring sensors status and configured to work ON/OFF automatically

**\*\*Multi-Room**  
for easy handling of various tasks

### TECHNICAL SPECIFICATION

1. 64-bit Linux operating system.
2. 4-core CPU, ARM architecture with 8 GB DDR4 memory, 512GB SSD NVMe
3. Monitor can connect at HDMI port for use in command mode.
4. Passive Cooling provides good main heat dissipation.
5. Supports Internet Protocol Version 4 (TCP/IPv4) with 1,000 Mb/s.

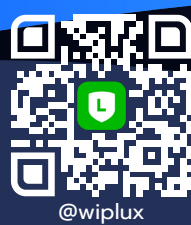
### SMART REMOTE CONTROL



### HARDWARE



- |                     |                     |
|---------------------|---------------------|
| 1 3.5 mm Audio Port | 5 USB-C Power In    |
| 2 2 x Type A HDMI   | 6 3.5 mm Audio Port |
| 3 Power Button      | 7 Gigabit Ethernet  |
| 4 2 x USB 3.0       |                     |



Follow Us :

