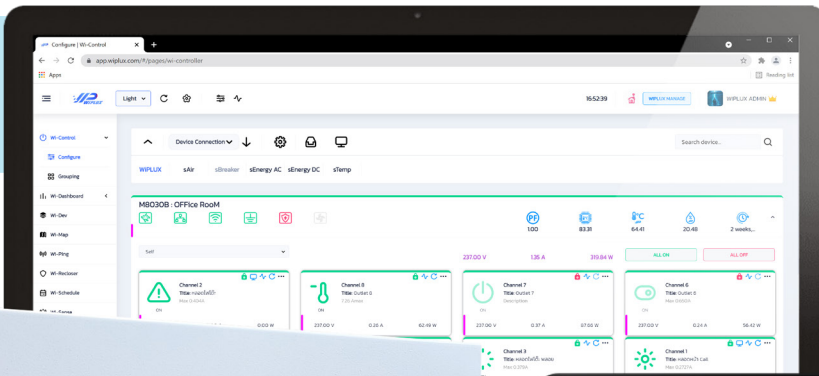




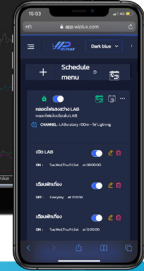
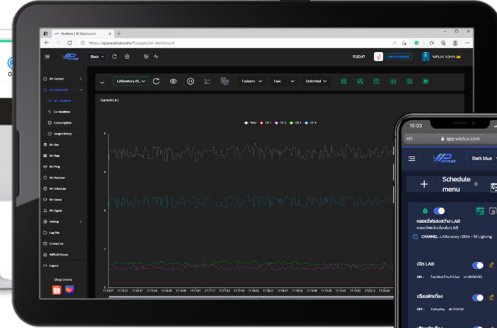
Relay  
**OMRON**



Available protocols  
**API**  
**MQTT**

GET IT ON  
**Google Play**

Download on the  
**App Store**



Breakers supported

**ABB**

**Schneider Electric**

**SIEMENS**

**EATON**

**MITSUBISHI**

**Panasonic**

etc.

# C8 SERIES

SMART Consumer Unit for Enterprise

## WHY WiPLUX?

- ◆ Quickly control
- ◆ Reduce travel
- ◆ Increase competitiveness



### This product for ...

Professional electric control, Apartment, Hotel, Base station, Device or Network seriously connected.

## WiPLUX Platform

- A** WiPLUX Cloud
- B** WiPLUX Local-Mesh
- C** WiPLUX Controller

**"SMART CONSUMER UNIT FOR ENTERPRISE"**

## C8 Series

The WiPLUX C series is a Smart Consumer Unit for controlling electrical power. The WiPLUX products are focused on Enterprise functions. The intelligent Consumer Unit can be controlled and monitored via the web app. The user can use LAN or WIFI to connect the intelligent PDU and support access to the web app on Local Area Networks, Intranet, and the Internet.

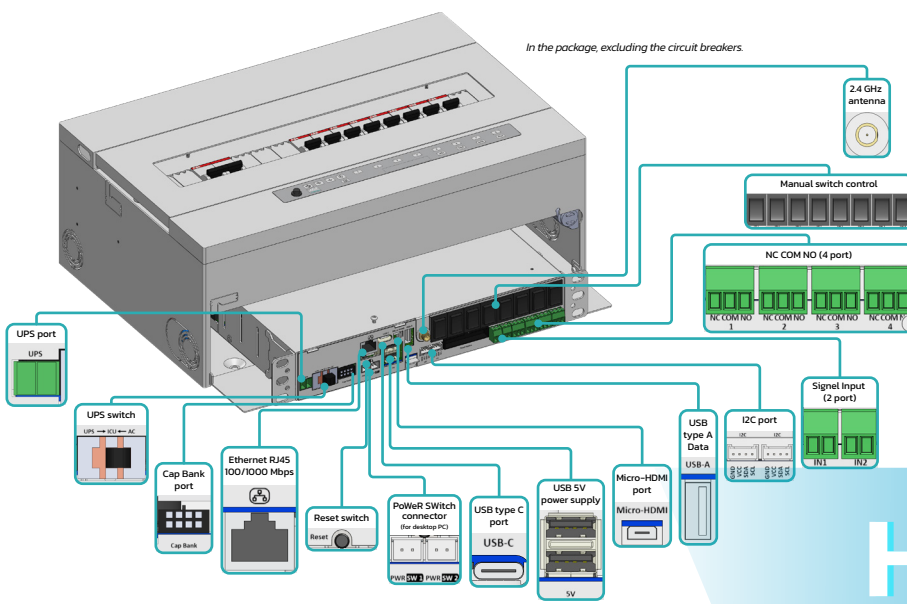
## Main Features

Manage ON/OFF/Restart	<b>Wi-Control</b>	High Current Support	<b>30A</b>
Automatic conditions ON/OFF/Restart	<b>Wi-Ping</b>	Communication Port	• Ethernet • WiFi
Amp Volt Watt Protection	<b>Wi-Recloser</b>	Short Circuit	<b>Durable</b>
Management	<b>Wi-Schedule</b>	Surge Protection	<b>Triple Varistor with Sensing</b>
Energy Monitoring	<b>Amp Volt Watt Digital Meter Online</b>	Control Mode	<b>SELF INTERLOCK</b>   <b>MASTER GROUPING</b>
Amp Volt Watt Values	<b>2 Decimal Places Resolution</b>	History	<b>Log File</b>

\*\* Specifications and appearance are subject to change without notice for product improvement.

Intellect Network Web Co., Ltd.  
9 Ramkhamhaeng43 Huamak Bangkokpi  
Bangkok 10240 Thailand

[www.wiplus.com](http://www.wiplus.com)  
[info@wiplus.com](mailto:info@wiplus.com)



# C SERIES

# HARDWARE

IN THE PACKAGE, EXCLUDING THE CIRCUIT BREAKERS

## FEATURES

**SWITCH ON/OFF**  
switch ON/OFF individual channel via the Web App

**SPLIT GROUP**  
split group into many PDU

**MERGE GROUP**  
merge group into one PDU

**ACCESSING C SERIES**  
accessing C series on Local Area Network, or the Internet

**SCHEDULE CONTROL**  
schedule control can be set in seconds

**REAL-TIME CONTROL**  
real-time control each channel of the C series

**AUTOMATIC RECLOSER**  
automatic recloser electrical protection

**ON Delay**  
ON delay of each channel

**PING IP**  
ping IP to the load device for ON/OFF/Restart automatically

**MONITORING**  
monitoring current, voltage, power, energy consumption, and environment status

**LOG FILES**  
log files playback for history and past event investigation

**FIRMWARE**  
firmware online update

**Wi-Map**  
memorize the installation location

**Wi-Dev**  
API management tools for developers customize

**Wi-Sense**  
monitoring sensors status and configured to work ON/OFF automatically

**Multi-Room**  
for easy handling of various tasks

## TECHNICAL SPECIFICATION

### Input

- 100-240 VAC, 50-60 Hz, 63A max.

### Output

- Terminal block 30A max

### Protector

- Circuit breaker
- Surge protection with sensing

### Sensor and Monitoring

- Total power sensor
- Channel power sensor
- Surge system monitoring
- Ambient temperature & humidity sensor
- Ball-bearing fan with rotation detection monitoring

## SMART REMOTE CONTROL

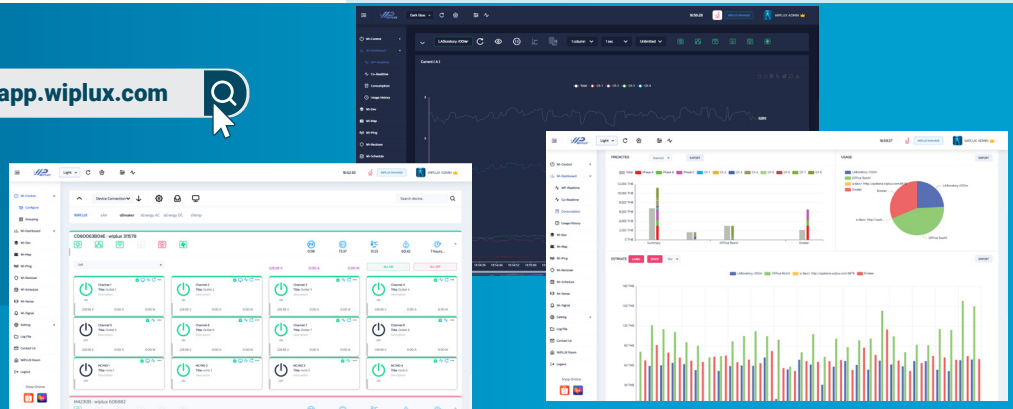
<https://app.wiplux.com>



www.wiplux.com



@wiplux



Follow Us :



WIPLUX



WIPLUX