

Acrel DTSD1352-4S, ADW300W

1&3 phase AC energy monitoring system

Standards:



AKH-0.66



Rogowski Coil

AWT100-POW



AWT100-CE

DTSD1352-4S (4 Ch)



LINE Notify

Excel, CSV, PDF, PNG, JPG

Ethernet

2.4 GHz

RS485 port

GET IT ON Google Play
 Download on the App Store
app.wiplux.com

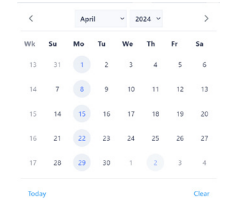
01

TOU meter calculation

Rate	Unit	2024	2024	Start	End
Off Peak	kWh	1	THB	01.01.2024	31.12.2024
Off Peak	kWh	3	THB	01.01.2024	31.12.2024

02

Some days comparison



03

Time range in everyday

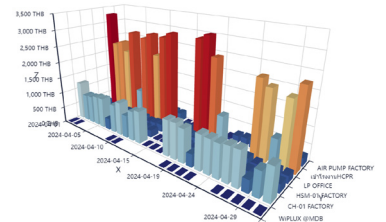
Start 08:00 to 12:00

04

Choosing and zoning Energy Meter

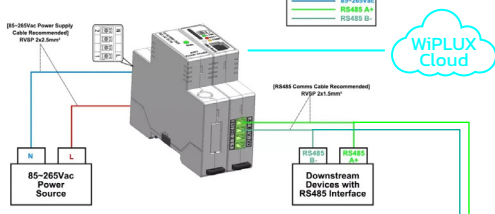
05

3D comparing analytic



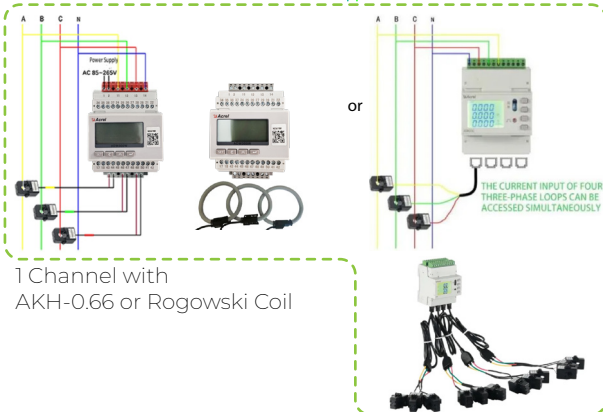
DSTD1352-4S or ADW300W and AKH-0.66 or Rogowski coil

Power module (AWT100-POW) & Gateway module (AWT100-CE)



WiPLUX Cloud

4 Channel with AKH-0.66



1 Channel with AKH-0.66 or Rogowski Coil

Configure

Consumption

Usage History

sEmeter AC on WiPLUX Platform

Follow Us :



Intellect Network Web Co., Ltd.
 9 Ramkhamhaeng43 Huamak Bangkok
 Bangkok 10240 Thailand
www.wiplux.com
 (+66) 081 309 9929, (+66) 02 718 8924