



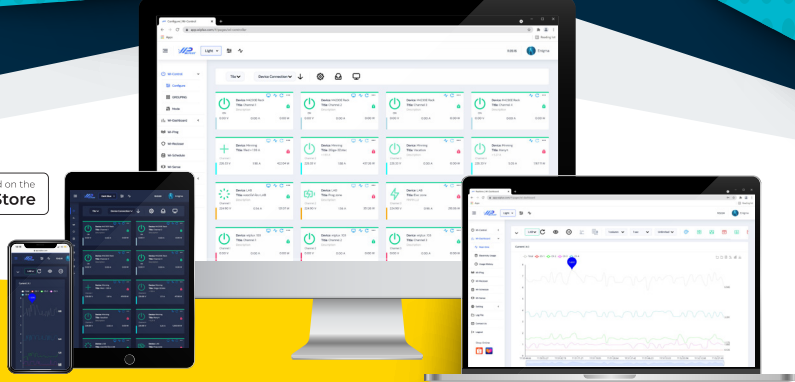
www.wiplux.com



app.wiplux.com

L series is a Smart PDU (Power Distribution Unit) for Business & Enterprise.

...It is an IoT product to control electricity automatically for IT systems and general electrical equipment via the internet to WiPLUX Cloud or work on LAN/VPN/intranet.



L SERIES SMART POWER DISTRIBUTION UNIT SMART PDU FOR BUSINESS & ENTERPRISE

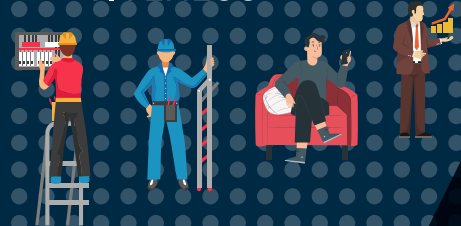
Available protocols
API MQTT



*This product for....
Professional electric control,
Apartment, Hotel, Base station,
Device or Network seriously connected.*

WHY WIPLUX?

- QUICKLY CONTROL
- REDUCE TRAVEL
- INCREASE COMPETITIVENESS



Manage ON/OFF/Restart **Wi-Control**

Energy Monitoring Amp Volt Watt Digital Meter Online

High Current Support **30 A**

Automatic conditions ON/OFF/Restart **Wi-Ping**

Amp Volt Watt Values 2 Decimal Places Resolution

Communication Port • Ethernet • WiFi

Amp Volt Watt Protection **Wi-Recloser**

Control Mode SELF MASTER INTERLOCK GROUPING

Short Circuit **Durable**

Management **Wi-Schedule**

History **Log Files**

Surge Protection Triple Varistor with Sensing

Intellect Network Web Co., Ltd.
9 Ramkhamhaeng 43 Ramkhamhaeng
Huamak Bangkok Bangkok
10240 Thailand
www.wiplux.com
(+66) 081 309 9929 (+66) 02 718 8924
version 1.2 13 DEC 21

**Specifications and appearance are subject to change without notice for product improvement.

L series

Smart PDU for Enterprise

TECHNICAL SPECIFICATION

Input

- 100-240 VAC, 50-60 Hz, 16 A/ 30 A max.

Output

- Plug socket 13 A max

Protector

- Circuit breaker
- Surge protection with sensing (some model)

Sensor and Monitoring

- Total power sensor (some model)
- Channel power sensor (some model)
- Surge system monitoring (some model)
- Ambient temperature & humidity sensor
- Ball-bearing fan with rotation detection monitoring

FEATURES

SWITCH ON/OFF
switch ON/OFF individual channel via the Web App

SPLIT GROUP
split group into many PDU

MERGE GROUP
merge group into one PDU

ACCESSING L SERIES
accessing L series on Local Area Network, or the Internet

SCHEDULE CONTROL
schedule control can be set in seconds

REAL-TIME CONTROL
real-time control each channel of the L series

AUTOMATIC RECLOSER
automatic recloser electrical protection

ON Delay
ON delay of each channel

PING IP
ping IP to the load device for ON/OFF/Restart automatically

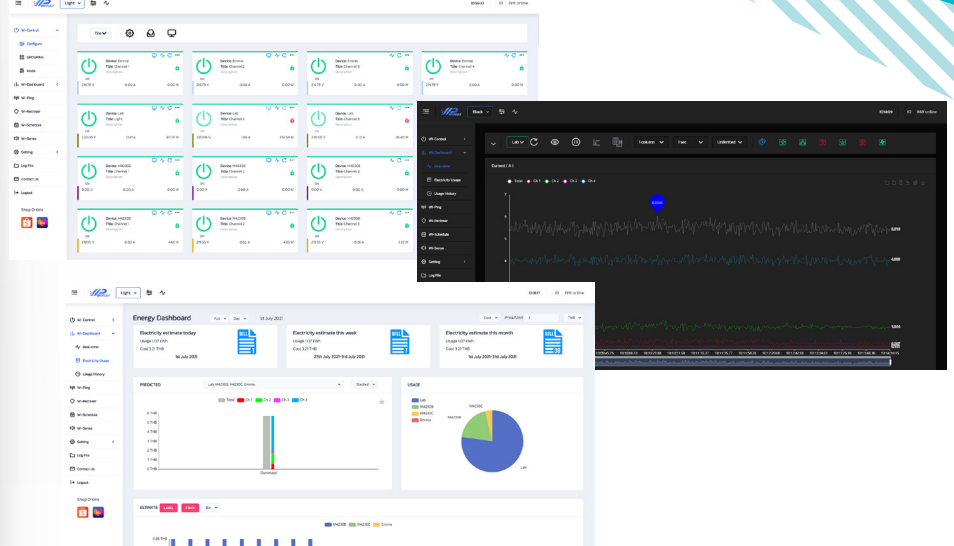
MONITORING
monitoring current, voltage, power, energy consumption, and environment status

LOG FILES
log files playback for history and past event investigation

FIRMWARE
firmware online update

SMART REMOTE CONTROL

<https://app.wiplux.com>



HARDWARE



01 Maximum input 30 A or C20 maximum input 16 A

02 Maximum output per channel 13 A

03 DIN rail mounting

04 Antenna high gain and effective IEEE 802.11 b/g/n 2.4 GHz

05 Inter Integrate Circuit (I2C) Connector

06 Ethernet RJ45 100/1000 Mbps

07 Circuit breaker short circuit protector

08 PoWer SWitch connector (for desktop PC)

09 Reset button

10 Rack mounting 1U Bracket installable 6 positions