



# C8 SERIES

SMART Consumer Unit for Enterprise

## WHY WiPLUX?

- ◆ Quickly control
- ◆ Reduce travel
- ◆ Increase competitiveness



## This product for ...

Professional electric control, Apartment, Hotel, Base station, Device or Network seriously connected.

## C8 Series

The WiPLUX C series is a Smart Consumer Unit for controlling electrical power. The WiPLUX products are focused on Enterprise functions. The intelligent Consumer Unit can be controlled and monitored via the web app. The user can use LAN or WIFI to connect the intelligent PDU and support access to the web app on Local Area Networks, Intranet, and the Internet.

## WiPLUX Platform

- A** WiPLUX Cloud
- B** WiPLUX Local-Mesh
- C** WiPLUX Controller

**"SMART CONSUMER UNIT FOR ENTERPRISE"**

## Main Features

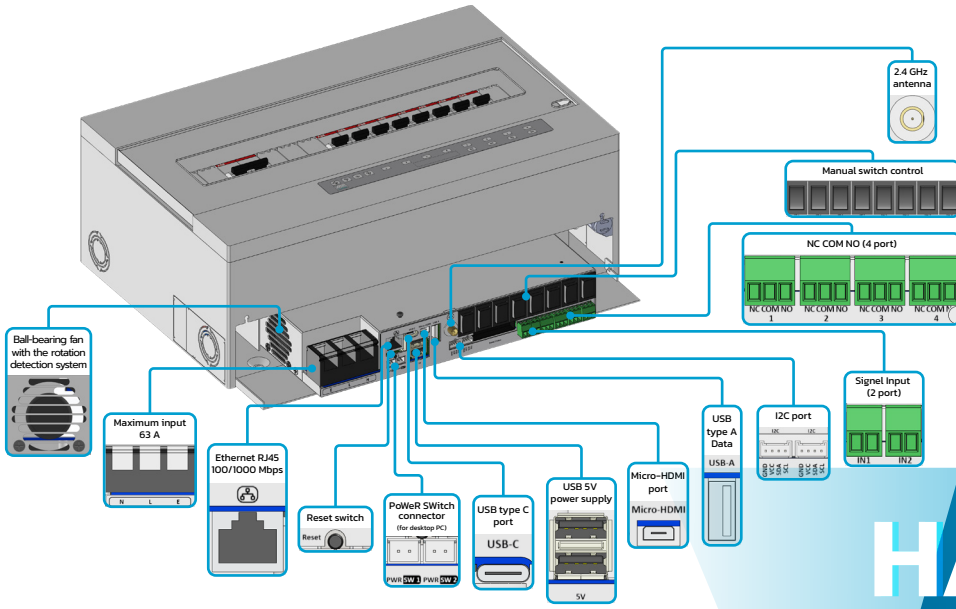
Manage ON/OFF/Restart	Wi-Control	High Current Support	30A
Automatic conditions ON/OFF/Restart	Wi-Ping	Communication Port	• Ethernet • WiFi
Amp Volt Watt Protection	Wi-Recloser	Short Circuit	Durable
Management	Wi-Schedule	Surge Protection	Triple Varistor with Sensing
Energy Monitoring	Amp Volt Watt Digital Meter Online	Control Mode	SELF   MASTER INTERLOCK   GROUPING
Amp Volt Watt Values	2 Decimal Places Resolution	History	Log File

\*\*Specifications and appearance are subject to change without notice for product improvement.

**CONTACT US:**  
 (+66) 081 309 9929  
 (+66) 02 718 8924

Intellect Network Web Co., Ltd.  
 9 Ramkhamhaeng43 Huamak Bangkoki  
 Bangkok 10240 Thailand

www.wiplus.com  
 info@wiplus.com



# C SERIES

# HARDWARE

IN THE PACKAGE, EXCLUDING THE CIRCUIT BREAKERS

## FEATURES

**SWITCH ON/OFF**  
switch ON/OFF individual channel via the Web App

**SPLIT GROUP**  
split group into many PDU

**MERGE GROUP**  
merge group into one PDU

**ACCESSING C SERIES**  
accessing C series on Local Area Network, or the Internet

**SCHEDULE CONTROL**  
schedule control can be set in seconds

**REAL-TIME CONTROL**  
real-time control each channel of the C series

**AUTOMATIC RECLOSER**  
automatic recloser electrical protection

**ON Delay**  
ON delay of each channel

**PING IP**  
ping IP to the load device for ON/OFF/Restart automatically

**MONITORING**  
monitoring current, voltage, power, energy consumption, and environment status

**LOG FILES**  
log files playback for history and past event investigation

**FIRMWARE**  
firmware online update

**\*\*Wi-Map**  
memorize the installation location

**\*\*Wi-Dev**  
API management tools for developers customize

**\*\*Wi-Sense**  
monitoring sensors status and configured to work ON/OFF automatically

**\*\*Multi-Room**  
for easy handling of various tasks

\*\*Options add on some functions.

## TECHNICAL SPECIFICATION

### Input

- 100-240 VAC, 50-60 Hz, 63A max.

### Output

- Terminal block 30A max

### Protector

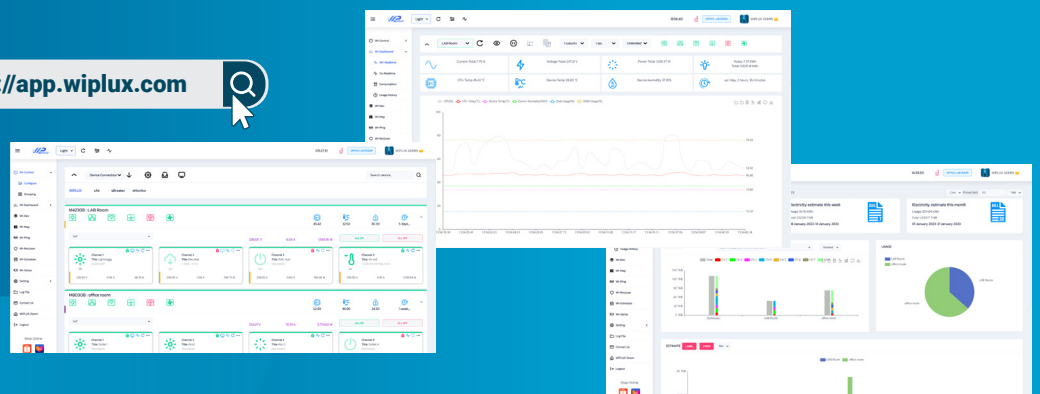
- Circuit breaker
- Surge protection with sensing (some model)

### Sensor and Monitoring

- Total power sensor (some model)
- Channel power sensor (some model)
- Surge system monitoring (some model)
- Ambient temperature & humidity sensor
- Ball-bearing fan with rotation detection monitoring

## SMART REMOTE CONTROL

<https://app.wiplux.com>



www.wiplux.com



@wiplux

Follow Us :



WIPLUX



WIPLUX